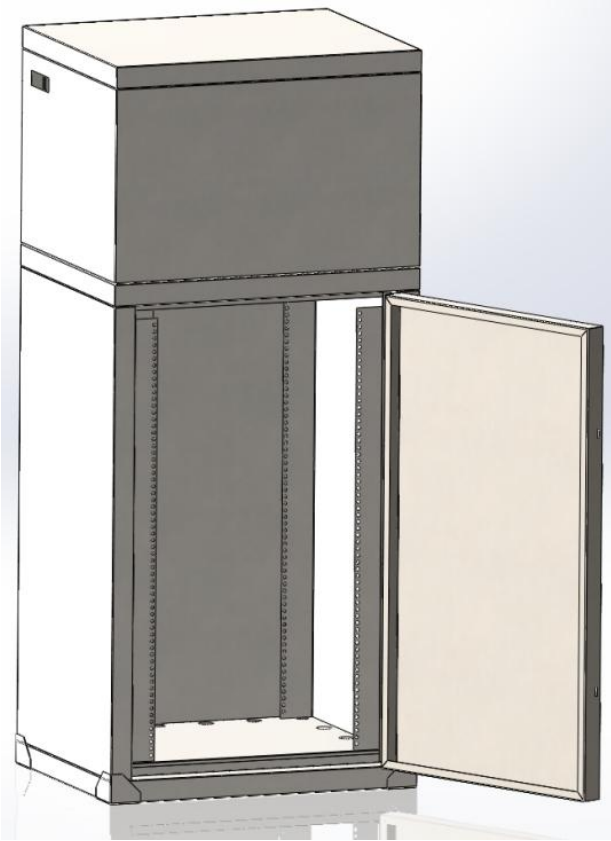


EQUIPMENT CABINET

PROTECTS ELECTRONICS FROM HEAT, DUST, AND HUMIDITY



OPERATION

This is a compressor cooled equipment cabinet that circulates the air inside the cabinet to form an enclosed space. This ensures that heat, cold, dust, and humidity from the outside air cannot enter the cabinet.

As the interior air of the cabinet cools, warm air is directed through the evaporator. The air duct then guides the cooled air back to the cabinet interior. The cabinet also has a heater for situations in which the cabinet interior is too cool. An adjustable thermostat controls both cooling and heating.

SPECIFICATIONS

- Cooling and heating capacity can be defined according to need
- Cooling capacity from 850 W
- Heating capacity from 250 W
- The interior temperature of the cabinet is controlled by an electronic thermostat
- Inlets at the back of the cabinet, the IP ratings of which can be defined to suit its placement

ACCESSORIES

- Manner castors
- Fixed floor plinth
- Roof
- The side wall of the equipment cabinet has a keyboard and mouse tray, and a monitor mount.
- Glass door, $\lambda = 0.8 \text{ W/mK}$
- Pull-out shelves

STRUCTURE

- Material options stainless steel and powder-coated steel
- The wall element contains a 50-100 mm thick polyurethane insulating sheet, $\lambda = 0.023 \text{ W/mK}$.
- Dimensions configurable separately
- Locked doors
- Adjustable feet

FINLEAD OY

Punojantie 4

42800 Haapamäki

www.finlead.fi